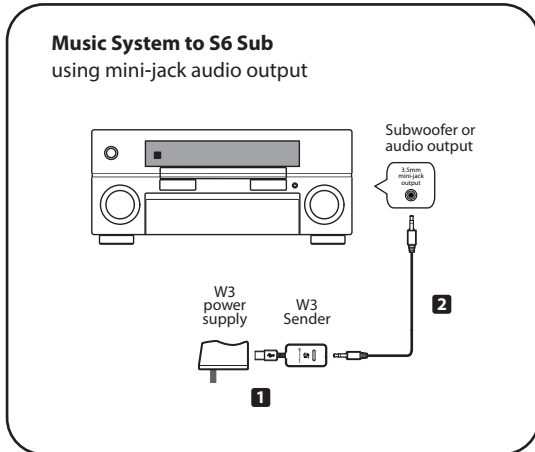


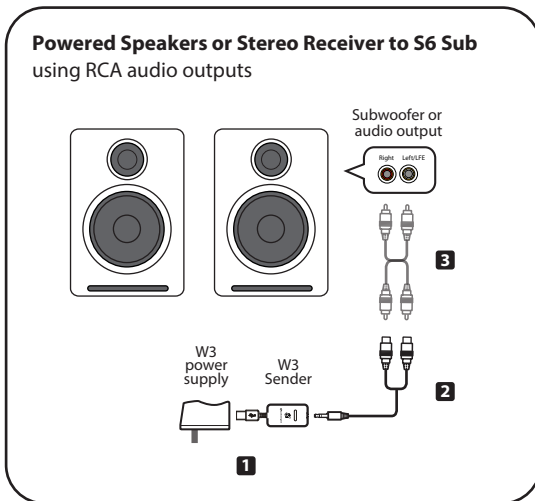
## S6 Wireless Subwoofer Setup

The W3 Wireless Audio Adapter, which is part of the S6 Wireless Subwoofer system, will allow you to send music wirelessly from any music system with an audio output to the S6 Subwoofer.

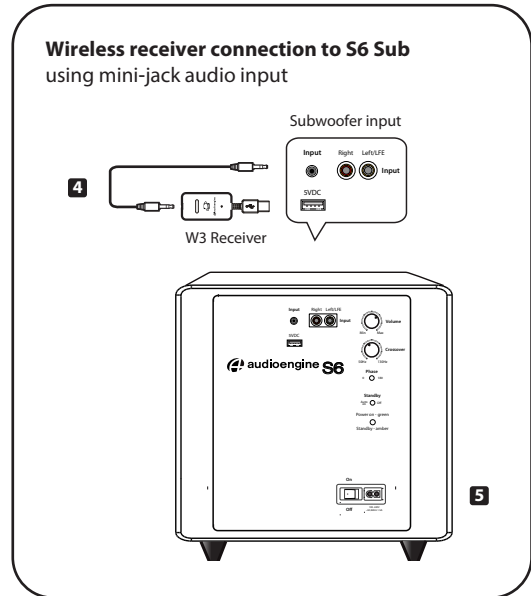
Here are the two most common setups to make your S6 subwoofer wireless using the Audioengine W3 wireless adapter kit.



- 1 Connect the W3 power supply to the W3 Sender and plug the W3 power supply into a functioning AC power outlet.
- 2 Connect a mini-jack audio cable from the W3 Wireless Sender to your music system audio out or subwoofer output.



- 1 Connect the W3 power supply to the W3 Sender and plug the W3 power supply into a functioning AC power outlet.
- 2 If your powered speakers or AV receiver has RCA-style audio outputs or sub outputs, connect the included RCA adapter "Y" cable to the W3 Sender.
- 3 Connect an RCA cable (included with your powered speakers or AV receiver) between the RCA "Y" adapter cable and your music source subwoofer out.



- 4 Connect the included mini-jack cable from the W3 Receiver to audio input on the rear panel of the S6 subwoofer.
- 5 Power on the S6 subwoofer.

The status indicators on the W3 Sender and Receiver will both blink briefly and will then go solid, indicating they are paired and ready to play your music.

For instructions on setting up the S6 Subwoofer, refer to the S6 Quickstart Guide.

Need Help?

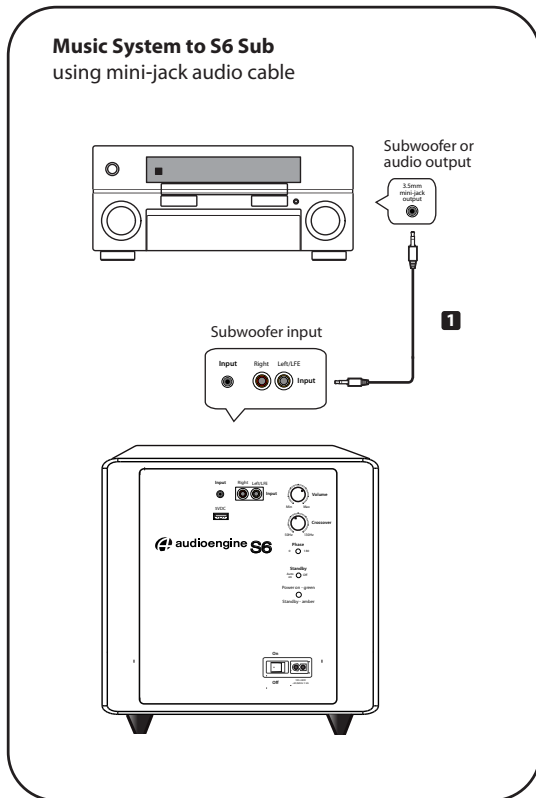
Visit: [audioengine.com/support](http://audioengine.com/support)

Email us: [support@audioengineusa.com](mailto:support@audioengineusa.com)

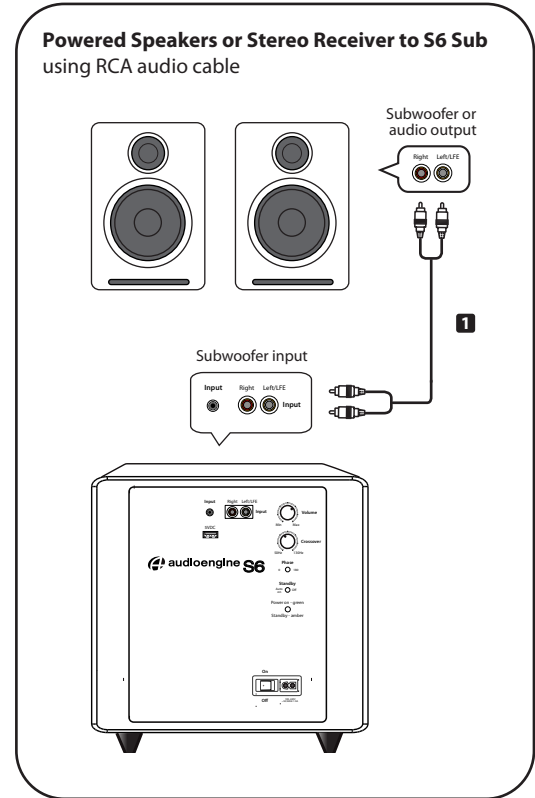
Call us: 855-845-5525

## S6 Wireless Subwoofer Setup

Here are two of the most common connection options to connect the S6 subwoofer to your music system, stereo receiver, or powered speakers.



- 1 Connect a 3.5mm mini-jack audio cable from an output of your stereo receiver, powered speakers, or any music system with an output, to the S6 subwoofer input.



- 1 Connect an RCA stereo cable from an output of your stereo receiver, powered speakers, or any music system with an output, to the S6 subwoofer input.

If your stereo receiver or music system has a single RCA sub out or LFE output, connect an RCA cable from this output to the S6 sub RCA left (L) input.